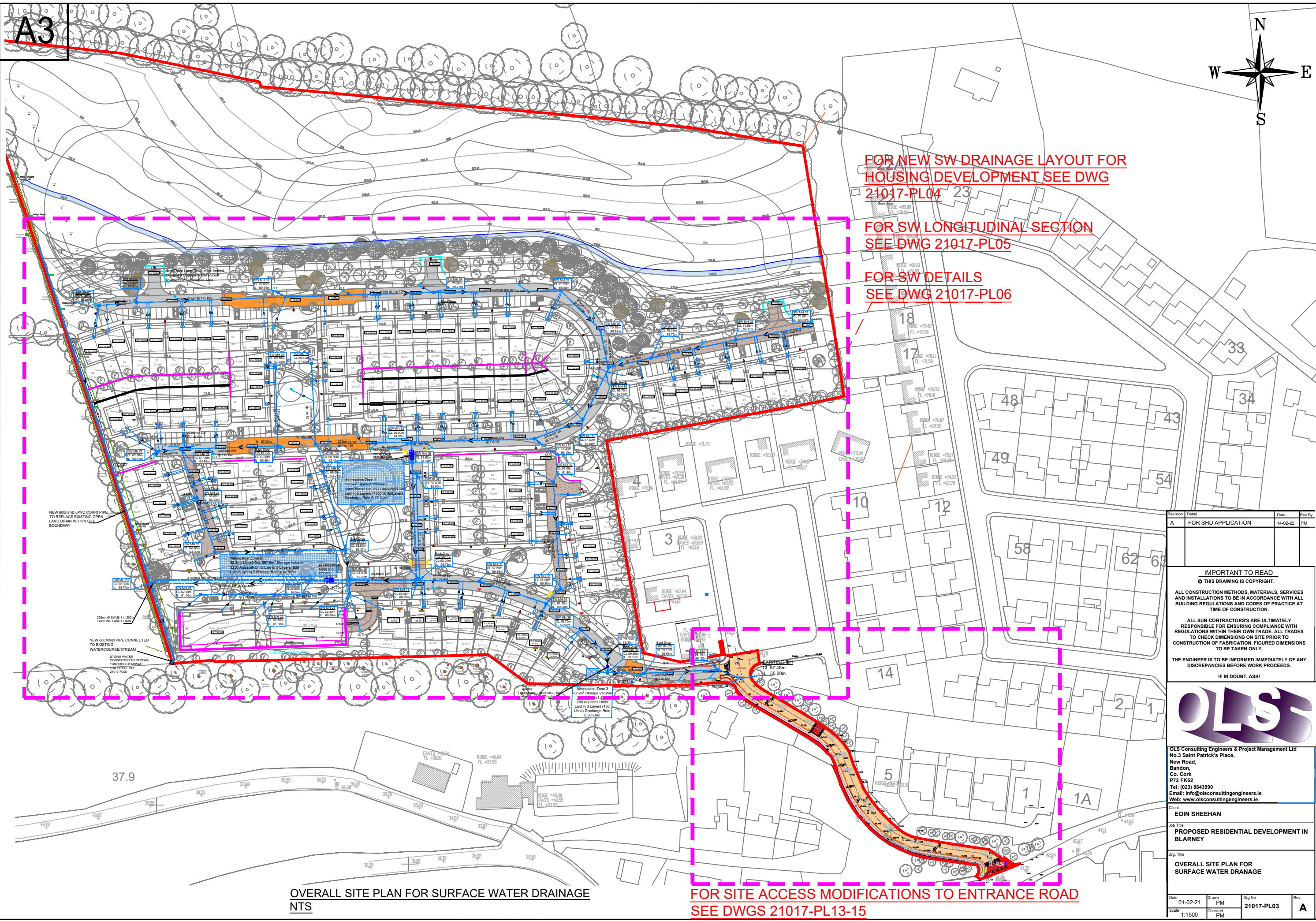
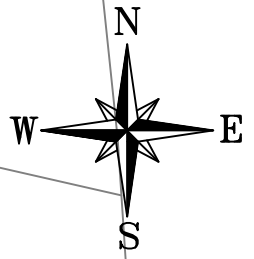


A3



FOR NEW SW DRAINAGE LAYOUT FOR HOUSING DEVELOPMENT SEE DWG 21017-PL04

FOR SW LONGITUDINAL SECTION SEE DWG 21017-PL05

FOR SW DETAILS SEE DWG 21017-PL06

FOR SITE ACCESS MODIFICATIONS TO ENTRANCE ROAD SEE DWGS 21017-PL13-15

OVERALL SITE PLAN FOR SURFACE WATER DRAINAGE NTS

Revision	Detail	Date	Rev By
A	FOR SHD APPLICATION	14-02-22	PM

IMPORTANT TO READ
 © THIS DRAWING IS COPYRIGHT.
 ALL CONSTRUCTION METHODS, MATERIALS, SERVICES AND INSTALLATIONS TO BE IN ACCORDANCE WITH ALL BUILDING REGULATIONS AND CODES OF PRACTICE AT TIME OF CONSTRUCTION.
 ALL SUB-CONTRACTORS ARE ULTIMATELY RESPONSIBLE FOR ENSURING COMPLIANCE WITH REGULATIONS WITHIN THEIR OWN TRADE. ALL TRADES TO CHECK DIMENSIONS ON SITE PRIOR TO CONSTRUCTION OF FABRICATION. FIGURED DIMENSIONS TO BE TAKEN ONLY.
 THE ENGINEER IS TO BE INFORMED IMMEDIATELY OF ANY DISCREPANCIES BEFORE WORK PROCEEDS.
 IF IN DOUBT, ASK!



OLS Consulting Engineers & Project Management Ltd
 No. 3 Saint Patrick's Place,
 Bandon,
 Co. Cork
 P72 FK52
 Tel: (023) 8843990
 Email: info@olsconsultingengineers.ie
 Web: www.olsconsultingengineers.ie

Client: EINO SHEEHAN
 Job Title: PROPOSED RESIDENTIAL DEVELOPMENT IN BLARNEY
 Dwg. Title: OVERALL SITE PLAN FOR SURFACE WATER DRAINAGE

Date	Drawn	Dwg No	Rev
01-02-21	PM	21017-PL03	A
Scale	Checked		
1:1500	PM		